



# ISOV I22

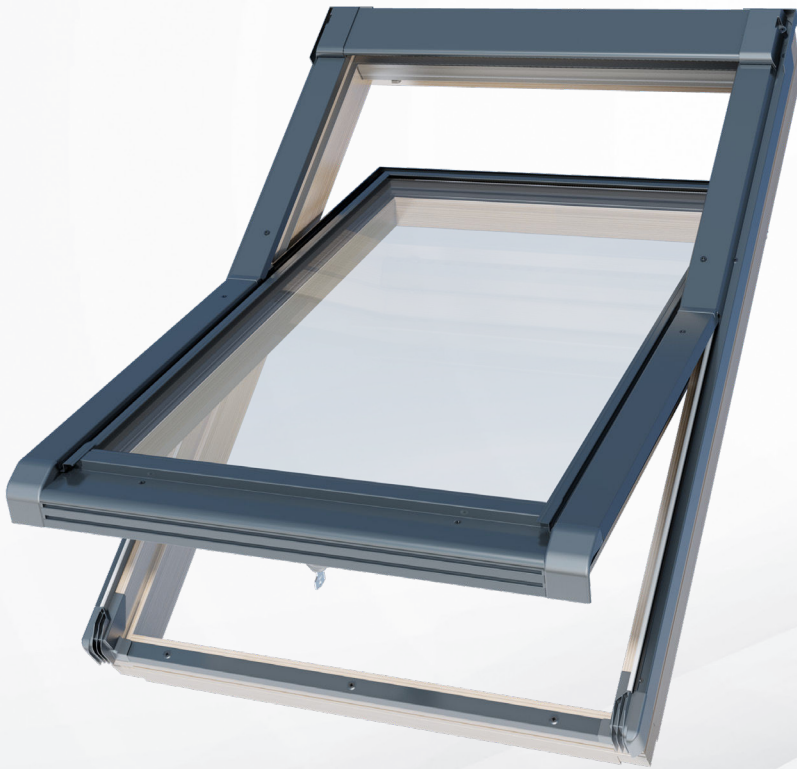
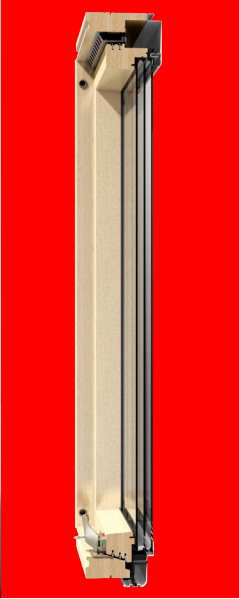
Uw = 1,06 W/m<sup>2</sup>K\*

GLAZING

Ug = 0,7 W/m<sup>2</sup>K

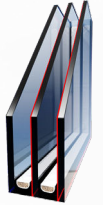
**10** years\*\*  
GUARANTEE  
FOR WINDOWS

**5** years\*\*  
GUARANTEE  
FOR GLASS



### GLAZING

triple glazed unit  
gas - argon  
2 x warm spacer  
2 x low emission coat  
toughened external pane



4TH/12/4/12/4T

4 gaskets

handle with the lock  
and micro-ventilation  
(2 keys in set)

NEO-VENT air inlet

Impregnated pine wood

Roof pitch



Non standard sizes  
**55-134cm x 78-160cm**

The non-standard orders are can be completed  
after a consultation with technical sales advisor  
or customer service office.



Window sizes:

glazing area [m <sup>2</sup> ]	0.20	0.27	0.36	0.45	0.55	0.45	0.56	0.70	1.18	0.71	0.89	1.04	0.91	1.12	0.88
size symbol	01	02	03	04	15	05	06	07	18	08	09	14	10	11	12
window size: width x height [cm]	55x78	55x98	66x98	66x118	66x140	78x98	78x118	78x140	78x160	94x118	94x140	94x160	114x118	114x140	134x98
ISOV I22	✓	✓	✓	✓	✓	✓	✓	✓	✓	✓	✓	✓	✓	✓	✓

\*Parameter Uw - thermal permeability coefficient.

\*\*Details about the guarantee policy available at [www.okpol.com](http://www.okpol.com)